



1233 W St. Georges Ave., Linden, NJ 07036 * 908-925-7500* 908-925-9240

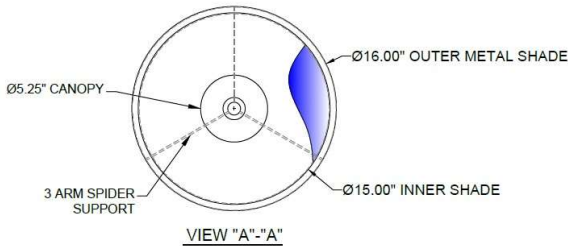
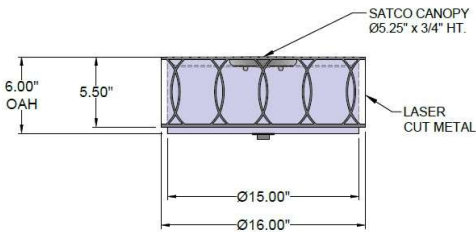
SPECIFICATIONS

FM-S100-115-01-875-OB	Flush Mount
Model Number	Type
Chain Link Laser Cut Flush Mount	Project
Name	Project
	QTY



Describe Special Modifications

Warranty: 1-Year Limited Warranty.
Complete warranty terms located at: www.litetopslampshades.com



CATALOG NUMBER Example: FM-S100-115-01-875-OB-E26X2-120V						
Hardware Style Code	Fabric/Material/Color Options	Series Code	Finish Options	Lamping	Voltage	Other Size Options
FM-S100	Outer LCM - Laser Cut Metal Inner 115-01 White Linen 115-05 Off White Linen 115-62 Black Linen 115-73 Gray Butcher Linen 115-96 Red Linen 124-70 Teal Pongee Silk 142-01 Global White 143-26 Geneva Linen Ash 143-27 Oatmeal Linen 145-01 White Aberdeen 145-09 Cream Aberdeen 174-21 Tan Silk Shantung 174-25 Chocolate Silk Shantung 189-21 Tan Shadow More options at www.litetops.com	875	APW - Aged Pewter DB - Dark Bronze GWH - Gloss White MBK - Matte Black OB - Oil Rubbed Bronze OCB - Oculux Bronze SN - Satin Nickel SVPC - Silver Powder Coat	E26X2 - 2 Medium Based GU24X2 - 2 GU24 CFL LEDMOD2700K - LED Module, 2700K, 2600 LM Per Board LEDMOD3000K - LED Module, 3000K, 2680 LM Per Board LEDMOD3500K - LED Module, 3500K, 2720 LM Per Board LEDMOD4000K - LED Module, 4000K, 2820 LM Per Board (Accepts 1 LED Board Per Fixture)	120V 120V 277V 277V	